

THE INSIGHTS

Published: 25th July 2024

Welcome to your August update

We know it's difficult to keep up with the number of changes and releases that come from Microsoft.

That's why every month, we highlight the latest updates that are important to your business.



News

- Global cloud providers face off in Q2FY24 comparison
- How to keep your Microsoft hardware & software secure



Copilot updates

- New scheduled prompts feature
- Copilot coaching has launched



Productivity updates

- Location updates enhance hybrid working
- New dynamic watermarks help document control



Azure updates

- GPT -4o launches



Security updates

- Unlicensed OneDrive Accounts archived
- Conditional access policies now live in eligible tenants



MICROSOFT NEWS

10 more AI terms everyone should know

As AI continues to evolve, so does its terminology. Here is the second instalment of AI terms to get you up to speed.

5 Copilot prompts to try out at work

Results from one of Microsoft's global research studies, "Copilot Usage in the Workplace," shows the surprising ways people in different business functions - from product development and engineering to finance and legal - are using AI in real work scenarios.

Global cloud providers face-off in Q2 2024 head-to-head comparison

Here's a head-to-head comparison of AWS, Microsoft and Google Cloud's recent financial earnings results for second-quarter 2024, including revenue, sales growth, cloud market share and operating income.

How to keep your Microsoft hardware & software secure

Trusting but verifying the code in the security software you use may not be an easy task, but it's a worthwhile endeavor. For hardware that includes code ensure that the traffic you expect to be leaving your network is what you expect. While it's not an easy task, to obtain an extremely secure network you should limit outbound traffic to only those ports, sites, and access that you have explicitly authorised. While this may be difficult to accomplish in the era of cloud services, it's not impossible.

Firstly, review how your Azure cloud services are set up and what networking processes you are using. Then keep an eye out for anomalies. Office applications shouldn't spawn or pivot to opening a shell such as cmd.exe or powershell.exe.

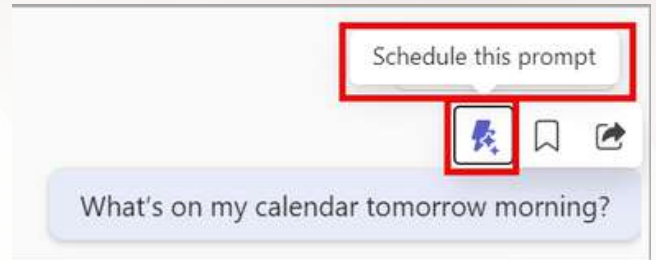




MICROSOFT COPILOT

New Scheduled prompts feature

You can find the scheduled prompts feature by hovering over a prompt you have submitted to Copilot. Then you can 'save and activate' button to schedule the prompt and automate more of your daily routine.

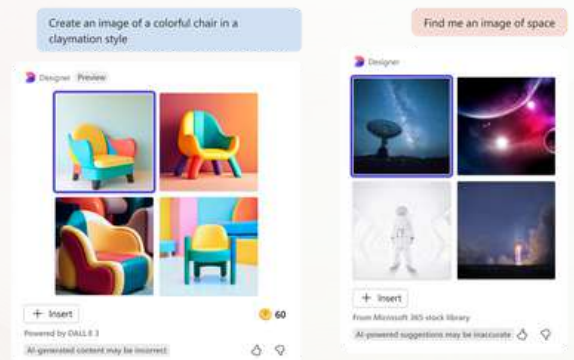


Coaching by Copilot in Microsoft feature

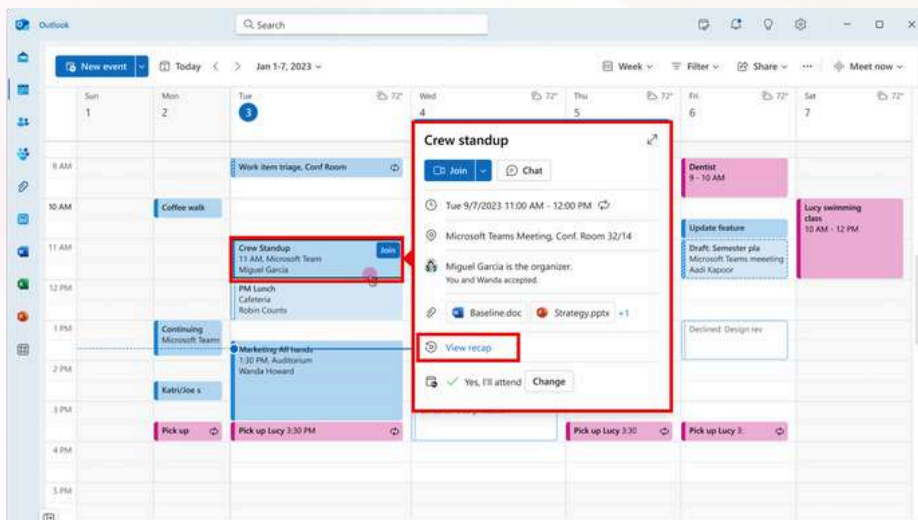
Level up your communication skills with Copilot's new 'coaching' feature. The AI generated feedback can help you create a new tone when collaborating with colleagues to help your communication become more effective.

Add visuals in Word & PowerPoint

Not a designer? Not a problem. You can now create the perfect AI-generated image with a simple prompt, or pull in the ideal stock photo design, helping to speed up your production process or even create a new aesthetic.



Intelligent recap for Outlook



Intelligent recap is an AI-powered feature from Microsoft Teams that helps you catch up on missed meetings with AI-generated notes, follow-up tasks, name mentions, topics, chapters, speaker identification, and more. This feature can now be directly accessed from the calendar in new Outlook, so that you have everything you need to quickly catch up on vital information.



PRODUCTIVITY

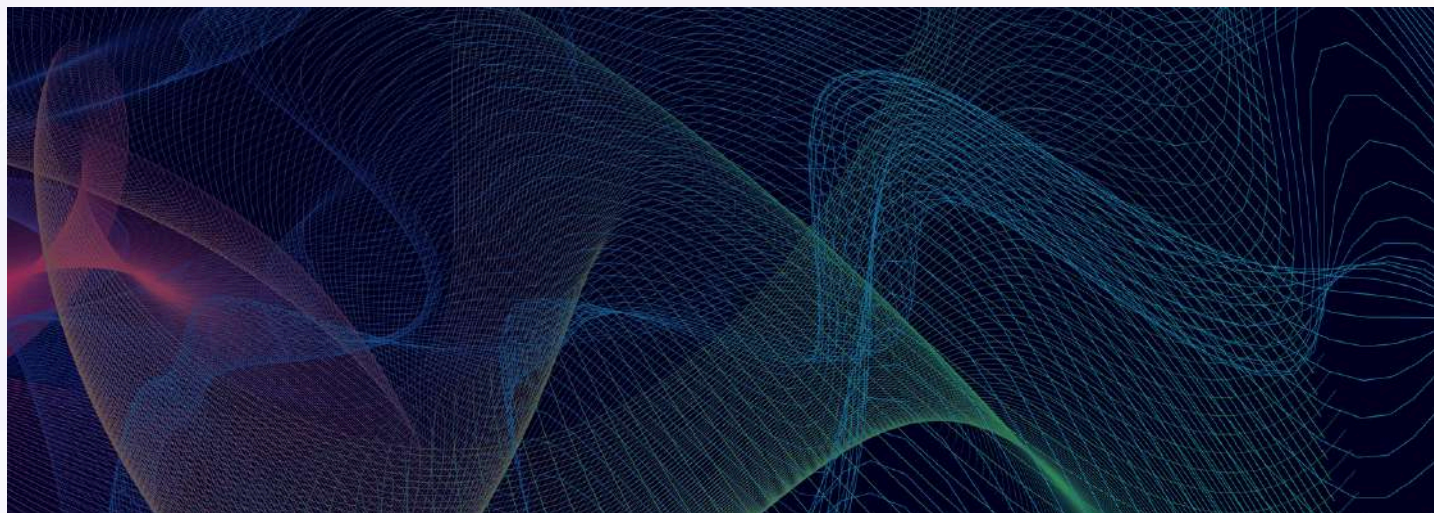
Automatic location updates on bookable desks

Automatic location updates on bookable desks to make it easier for you to keep your work location up to date and connect with others in the office so that you can strike the right balance of online and in person collaboration.

Microsoft Word, Excel, PowerPoint: Protect sensitive files with dynamic watermarking

Keep your sensitive data protected across all teams with Microsoft's new dynamic watermarking feature. It's a new sensitivity label setting that will add watermark text containing your information (email address) onto content in files created in Microsoft Word, Excel, and PowerPoint.

Ensuring everyone knows who the originating author is and making it harder for colleagues to inadvertently share.



MICROSOFT AZURE

GPT-4o has launched!

Microsoft have launches OpenAI's latest model on Azure. This new model, officially named GPT-4o-2024-08-06, brings innovative features designed to elevate developer experiences on Azure. Specifically, the new model focuses on enhancing productivity through Structured Outputs, like JSON Schemas, for the new GPT-4o and GPT-4o mini models.



MICROSOFT SECURITY

New Microsoft Entra suite

The new Microsoft Entra suite integrates five capabilities: Private Access, Internet Access, ID Protection, ID Governance, and Face Check in Verified ID Premium, included with Microsoft Entra Suite. With these, you can streamline user onboarding, enhance security with automated workflows, and protect against threats using Conditional Access policies. See how to reduce security gaps, block lateral attacks, and replace legacy VPNs, ensuring efficient and secure access to necessary resources.

It's a unified solution for secure access management, identity verification, and Zero Trust security for cloud and on-premises resources.

Microsoft OneDrive: Update for unlicensed accounts

After this storage policy goes into effect in your tenant, any OneDrive user accounts that have been unlicensed for more than 90 days will be archived automatically and will become inaccessible to end users.

Admins can view these accounts with admin tools, but the accounts will not be accessible to users until admins take action on them. For example, a OneDrive account that became unlicensed on August 1, 2025 will be inaccessible to users as of October 1, 2025.

As an admin, you can view a list of unlicensed accounts in your tenant by navigating to SharePoint admin center > Reports > OneDrive accounts. Some admins will have access to this page as soon as July 26, 2024, but most admins will be able to access the page closer to August 16, 2024. Read the full announcement.

Conditional Access policies will now be live in your tenant if you have not switched them off

In our December 2023 updates we warned that Microsoft was creating Microsoft managed Conditional Access policies in your tenant, as part of their Secure Future initiative.

Now that these policies have been in this mode for 90 days, they were automatically turned on during the week of August 05, 2024. Once the policies are enabled, all users covered by them will need to have multifactor authentication.

If you're unsure how these will affect your organisation, talk to one of our experts today.

[Get more technology insights across Microsoft and more on our website](#)